

linea

COMMERCIAL AREA



## LAVISTA DEVELOPMENTS

Established in 1991, LA VISTA Developments prides itself in creating a new standard in resort and residential living through its outstanding record of accomplishments. With an in-house design office that includes an expert team of architects and landscape designers, LA VISTA Developments' holistic approach of building new communities embraces all practices from vision to design, construction, finishing and maintenance, which has allowed us to continually deliver the highest standards to our clients..

We have amassed a large client-base whose belief in our expertise and in the strong investments made with a property purchase from LA VISTA Developments continues to fuel our drive to grow even further.

### Mission

our mission is to lead the market by consistently providing the highest quality homes, services, finishing, landscaping, architectural design, and the strongest return-on-investment in the Egyptian real estate market.

### Vision

We strive to provide our clients with a sanctuary that inspires them and make it our goal to elevate the real estate market in Egypt through consistently meeting their high expectations.

The bedrock of our work at LA VISTA Developments is a set of fundamental principles encrypted in our company DNA; that is dedication to our clients, commitment to our short and long term business plan, expert in-house teams that oversee all projects from start to finish and beyond.



# MASTERPLAN



## ABOUT LINEA COMMERCIAL

LINEA commercial is located in EL PATIO ORO New Cairo compound inside the Exclusive Golden Square extension developed by Lavista Developments.

It includes Total of 8564 m<sup>2</sup> Site Area, 2 Buildings, 5 floors and a total of 27,773 m<sup>2</sup> Build up Area. It provides various of commercial facilities that deliver a full memorable experience for the visitors starting from Retail shops, supermarket, administrative offices, restaurants & cafes, GYM and much more. Where all the visitors have the access to these facilities.

# LOCATION MAP

Cairo  
Airport

Ring Road

CAIRO SUEZ HIGHWAY

Mirage City

El Rehab City

EL PATIO 1

EL PATIO 2

EL PATIO 3

NEW CAIRO

EL PATIO  
ORO

linea  
COMMERCIAL AREA

EL PATIO ORO Located inside the exclusive Golden Square. Nestled among neighborhood of premium gated communities.

EL PATIO ORO is only 10 Km from the Cairo-Suez road and 12 Km from the Ain Sokhna toll station, making beach getaways accessible on a weekly basis.

Also accessible from EL PATIO ORO is The American University in Cairo (AUC), which is a short 7 Km away and Mivida Compound is at a distance of 5 Km away.

Road 90

Choueifat  
School

AUC

EL PATIO 7

East Ring Road

CAIRO SOKHNA

Cairo Sokhna

# FACILITIES & FEATURES



## RETAIL SHOPS

Providing a diversity of top malls and shopping centers' renowned brands, accessible to all visitors to enjoy the experience and have different options to choose from.



# FACILITIES & FEATURES



Food & Beverage is the key of gathering a group of people in one place.



# RESTAURANTS

## RESTAURANTS & CAFES

"NOTHING BRINGS PEOPLE TOGETHER LIKE A GOOD FOOD IN A GOOD PLACE"



LINEA commercial includes a diversity of restaurants and cafes for the visitors to enjoy their stay and create their moments.

# FACILITIES & FEATURES



## MEDICAL CENTER

# SUPERMARKET



GET EVERYTHING IN YOUR LIST

“ENRICHING YOUR HOMES WITH THE BEST ESSENTIALS”

LINEA COMMERCIAL includes a supermarket with Direct Entrance from street level in upper basement with a total of 912 m2.





# ADMINISTRATIVE OFFICES



A top level designed offices suitable for small businesses and multinational companies to reflect their luxury image of the company

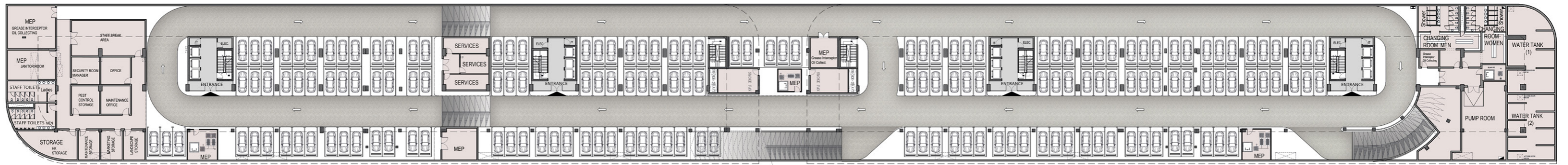
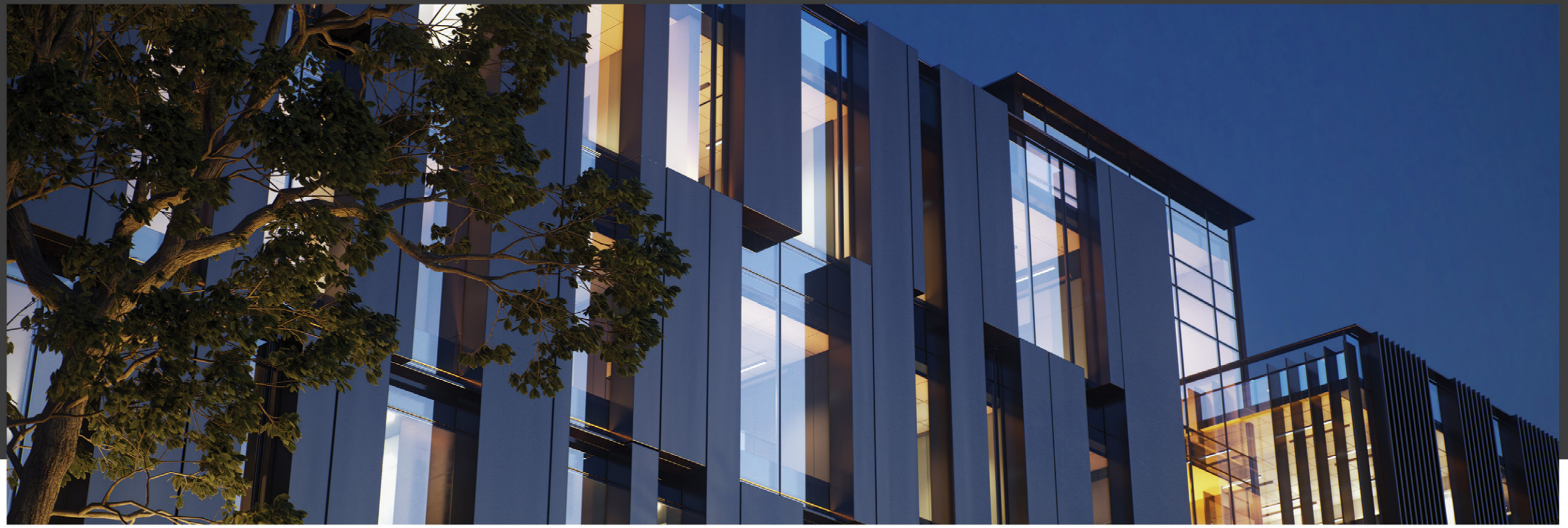
“START WORKING SOMEWHERE SPECIAL”



GYM

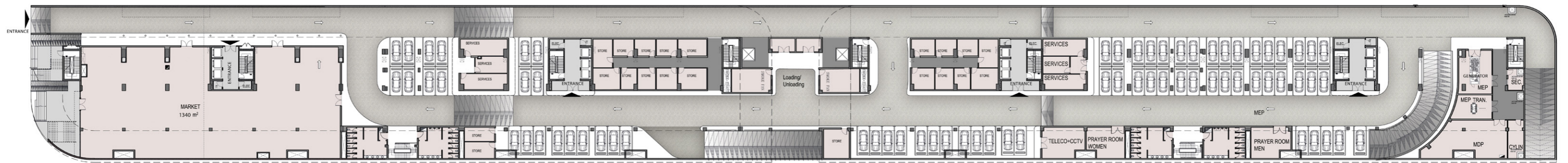
# FLOOR PLAN LOWER BASEMENT FLOOR

Total Floor Area 8564 m<sup>2</sup>



# FLOOR PLAN UPPER BASEMENT FLOOR

Total Floor Area 8564 m<sup>2</sup>



# FLOOR PLAN GROUND FLOOR

Retail shop including a Supermarket

Total Floor Area 2482 m<sup>2</sup>



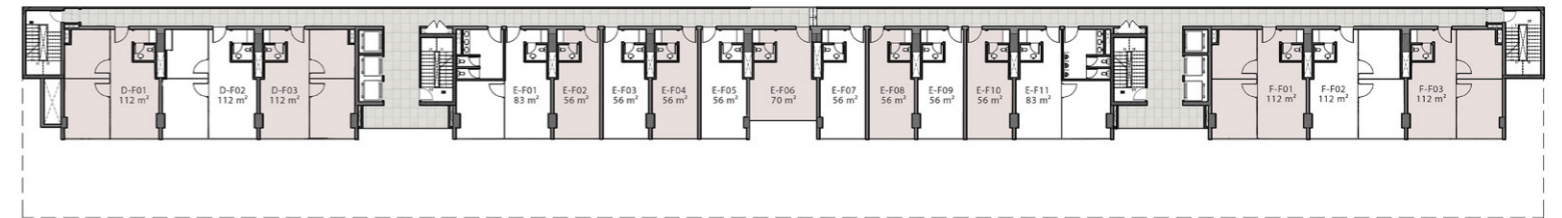
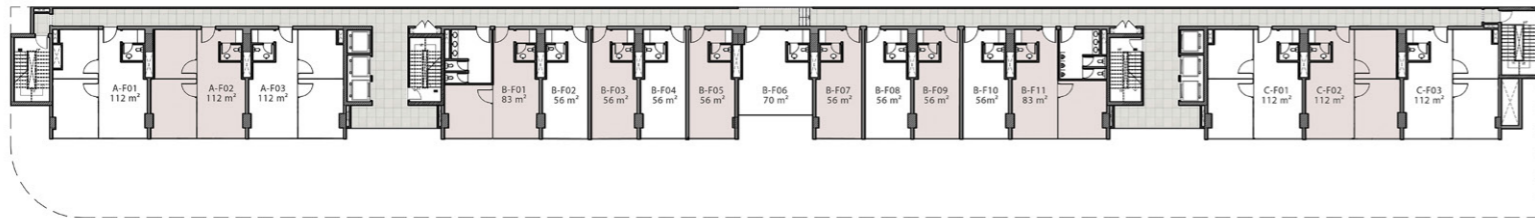
## Entrance



FLOOR PLAN  
**TYPICAL**  
 1<sup>ST</sup> & 2<sup>ND</sup>  
**FLOOR**

Administrative office & a GYM

**Total Floor Area 2729m<sup>2</sup>**





**LAVISTA**

DEVELOPMENTS

